

# Rural Nevada Big Picture Overview

John Packham, PhD

Associate Dean, Office of Statewide Initiatives

And

Gerald J. Ackerman, M.S.

Assistant Dean Rural Programs

University of Nevada, Reno School of Medicine

Nevada Rural Communities Summit

October 28, 2024



University of Nevada, Reno

**School of Medicine**

Office of Statewide Initiatives



NEVADA HEALTH  
**SERVICE CORPS**



University of Nevada, Reno  
**School of Medicine**

State Office of Rural Health



University of Nevada, Reno  
**School of Medicine**

Project ECHO



**NEVADA HEALTH  
WORKFORCE**  
RESEARCH CENTER



University of Nevada, Reno  
**School of Medicine**

Area Health Education Centers

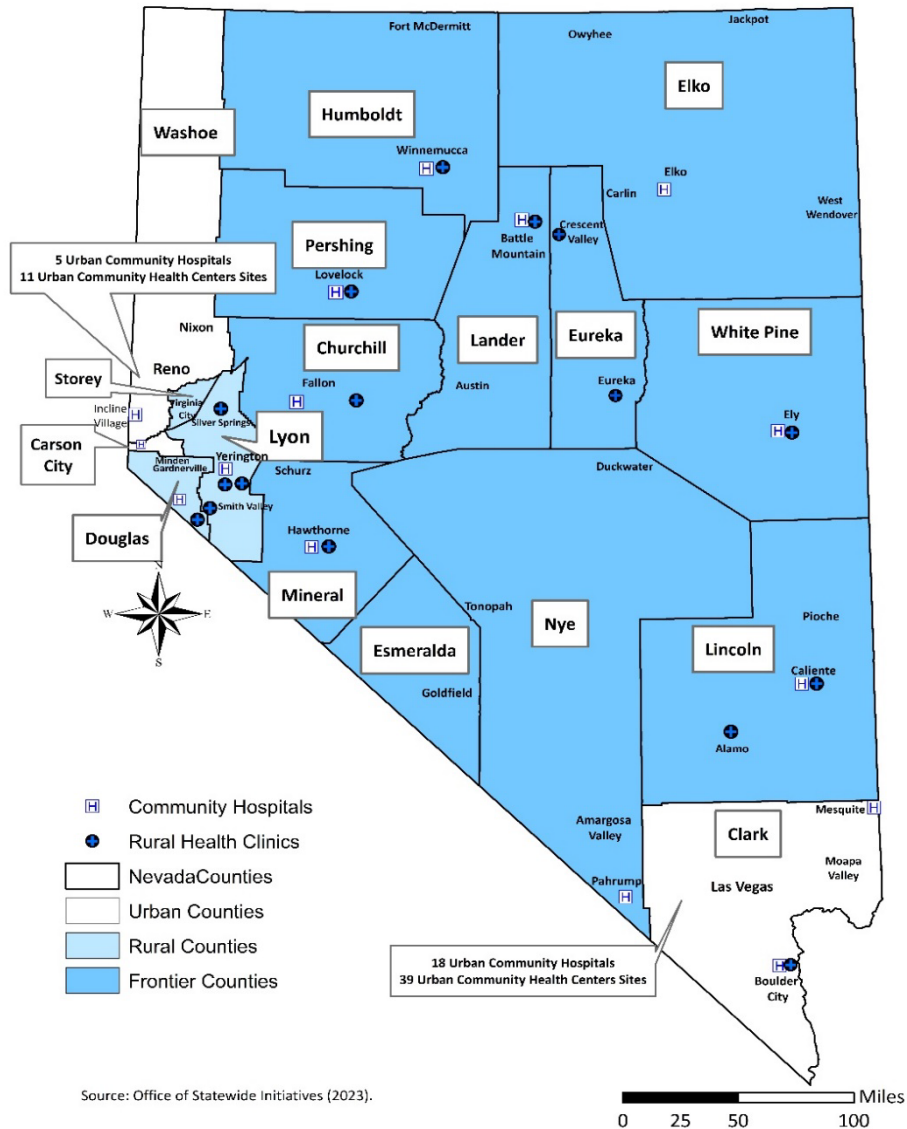
**Nevada Instant Atlas**

County-Level Health Workforce and Population Health Database

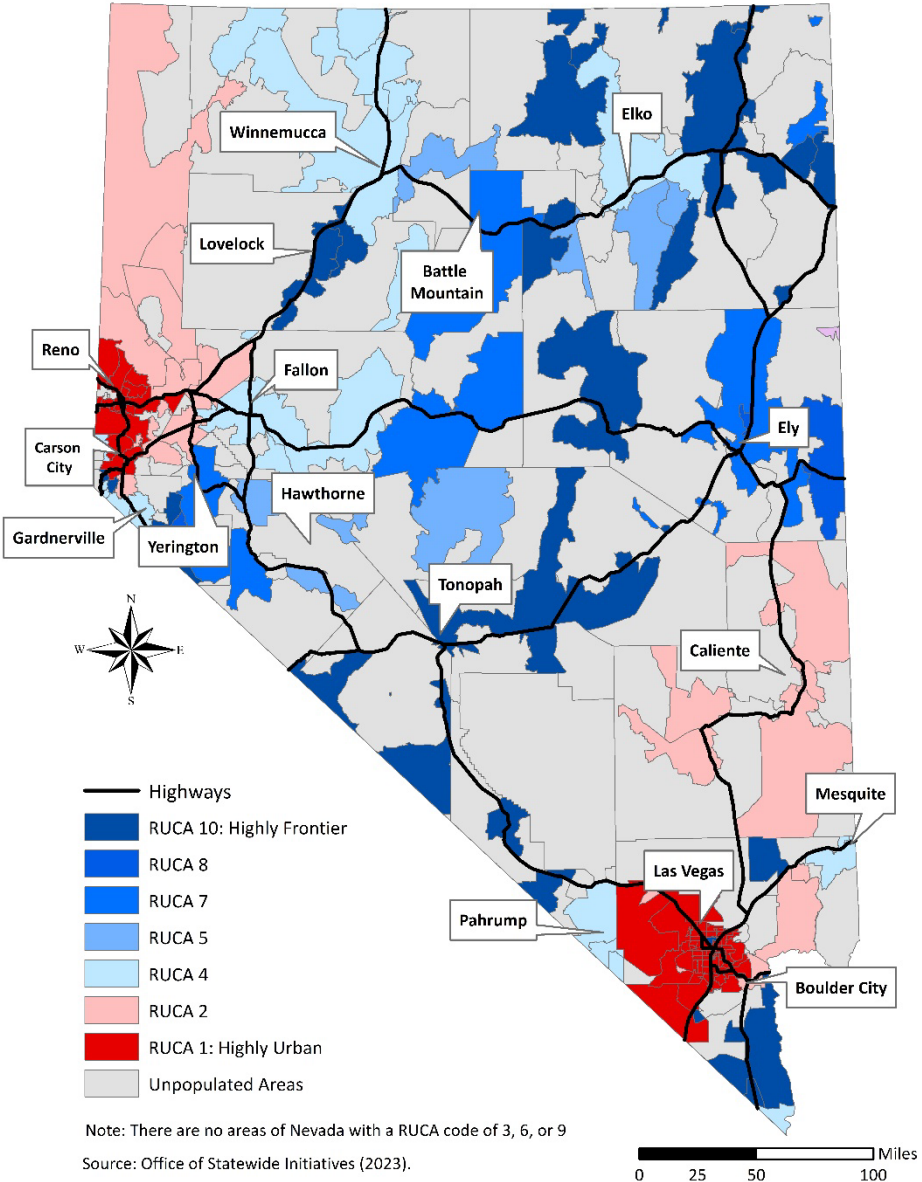


# A Snapshot of Rural and Frontier Nevada in Fifteen Maps

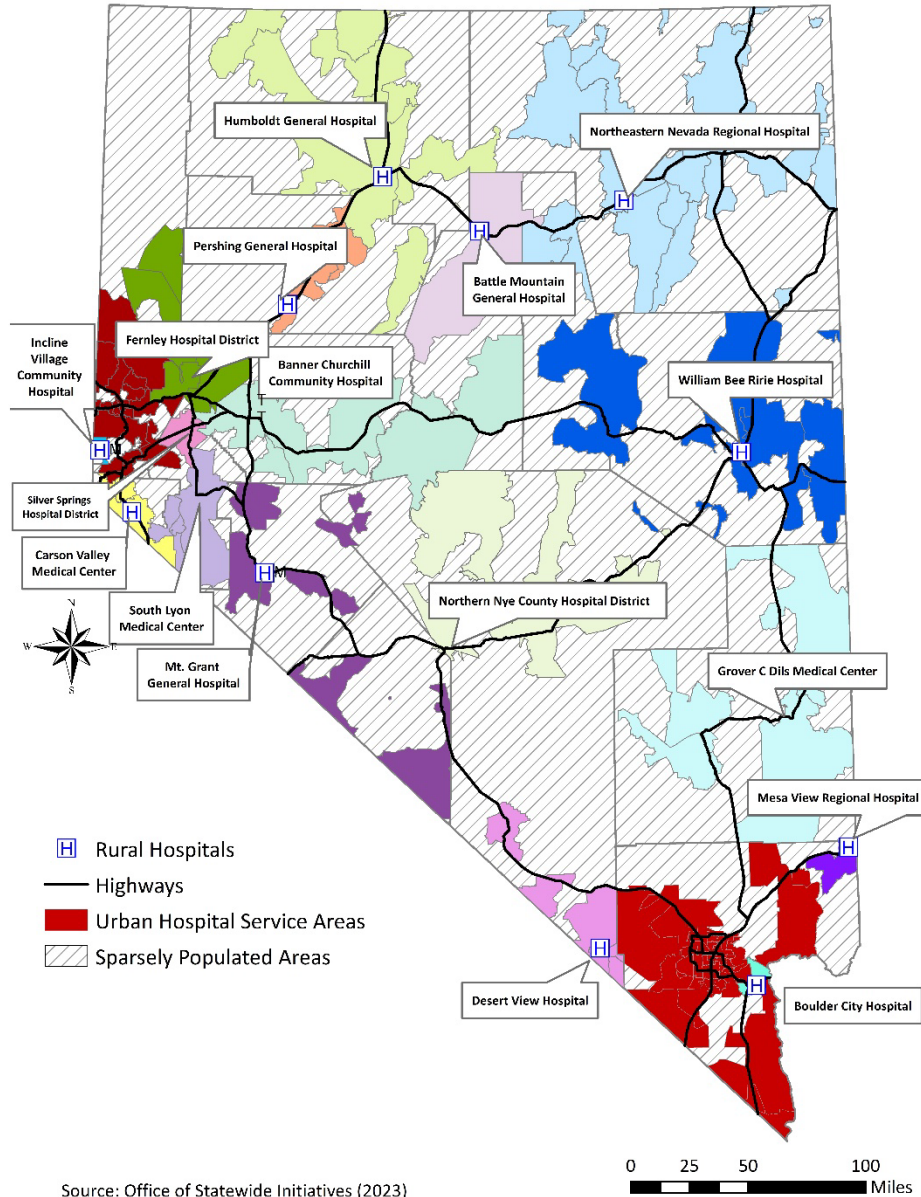
# Urban, Rural, and Frontier Nevada



# Lots of Frontier “RUCAs”!

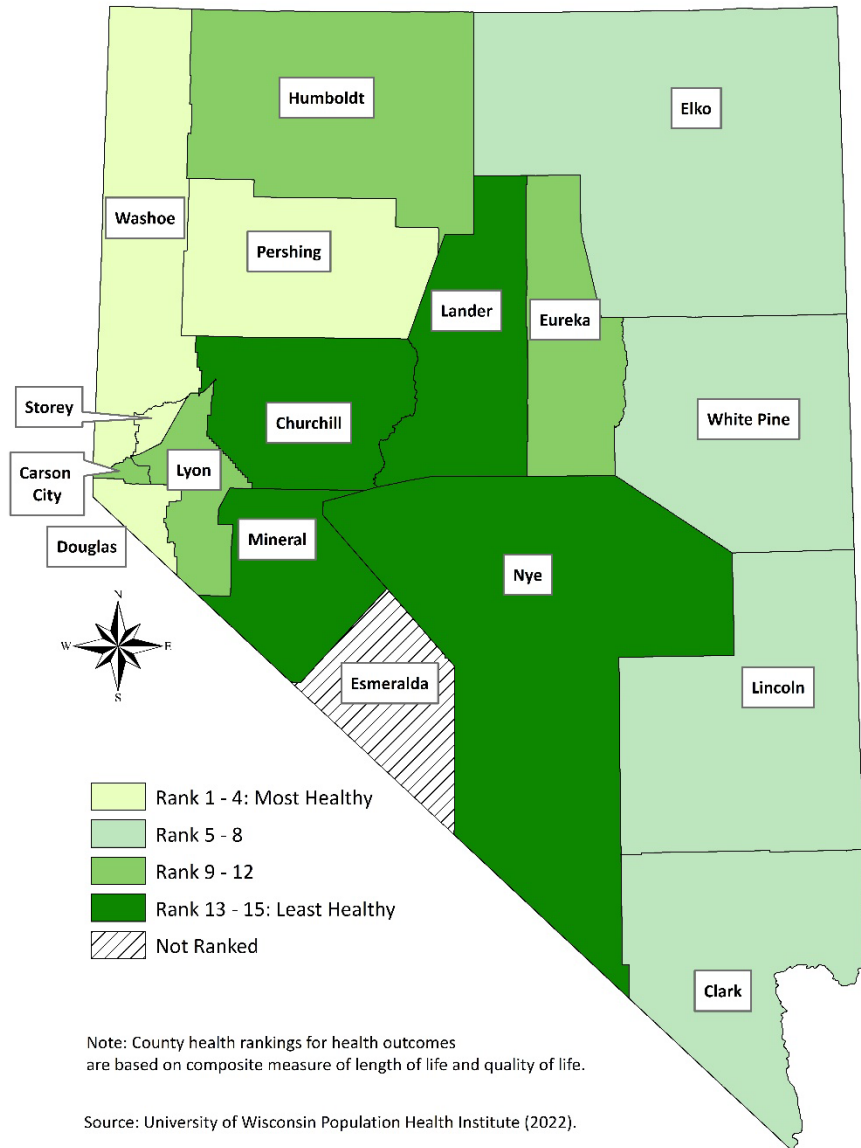


# CAH Hospitals and Clinics

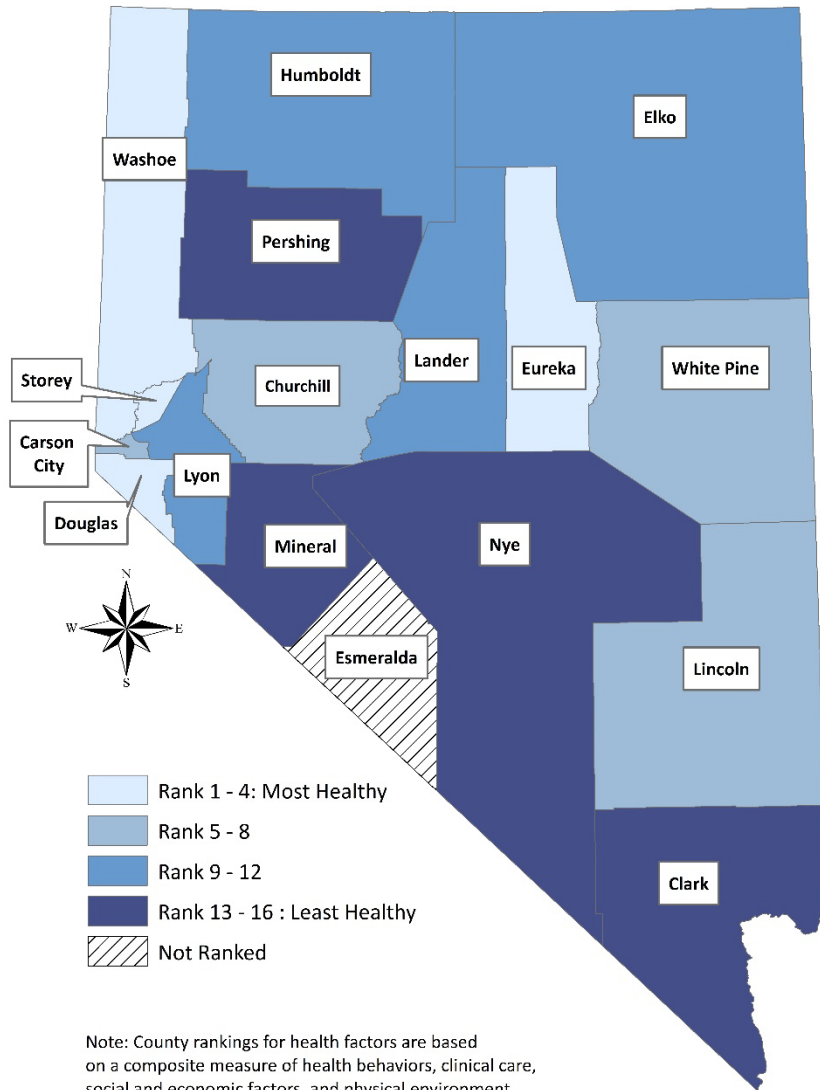


# Health Outcomes – Today's Health

- Premature death
- Life expectancy
- Self-reported physical health and mental health
- Low birthweight babies
- Infant mortality
- Child mortality



# Health Factors – Tomorrow's Health

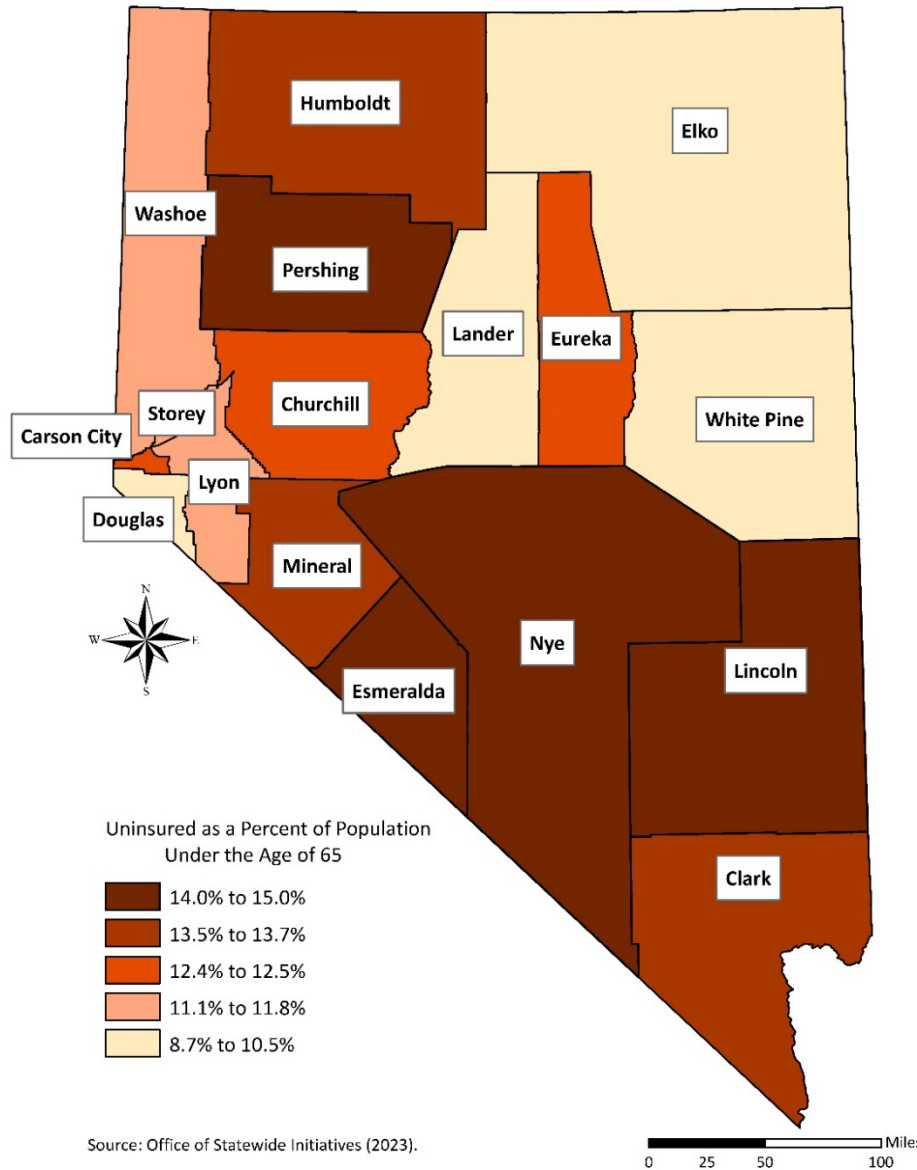


Source: University of Wisconsin Population Health Institute (2022).

- Adult smoking
- Diet and exercise
- Alcohol and drug use
- Access to and quality of care
- Income and poverty
- Education and employment
- Family and social supports
- Community safety
- Environmental quality
- Housing



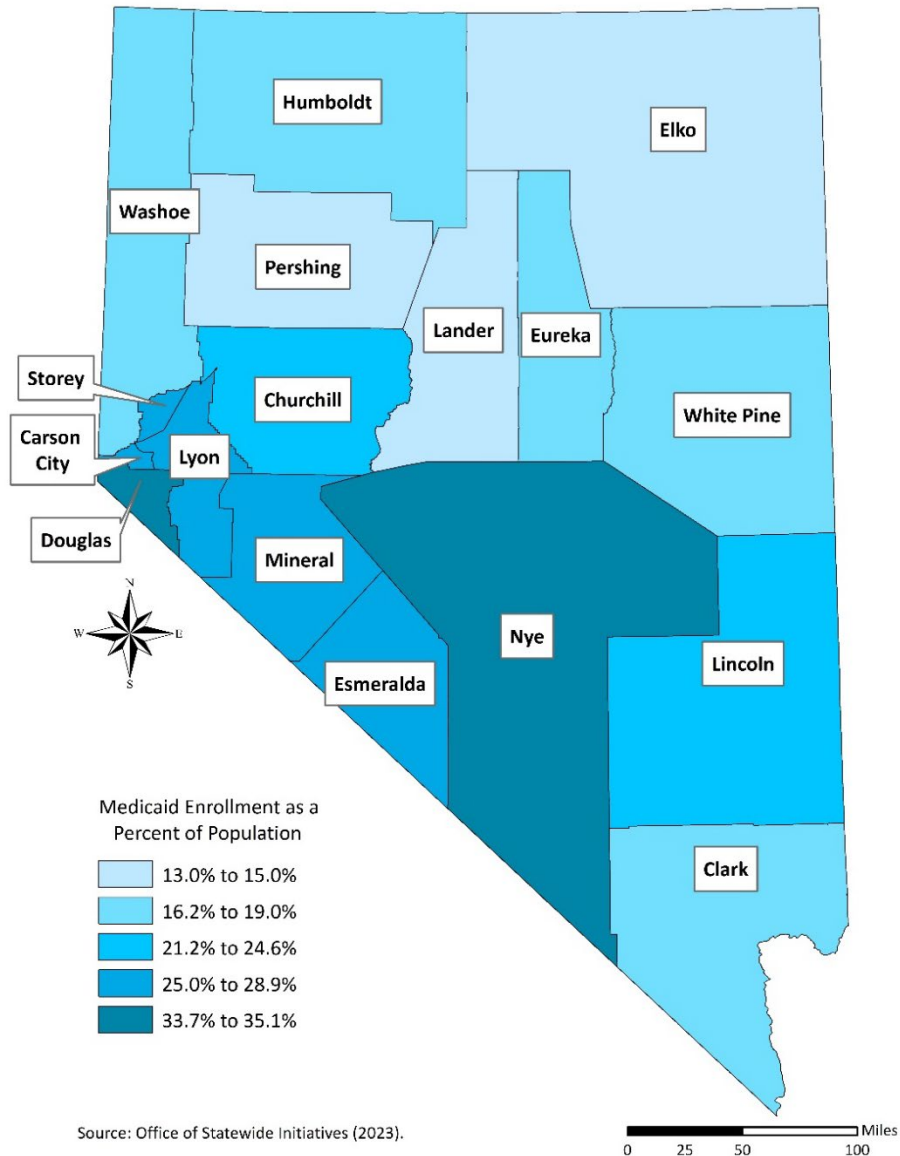
# Uninsured



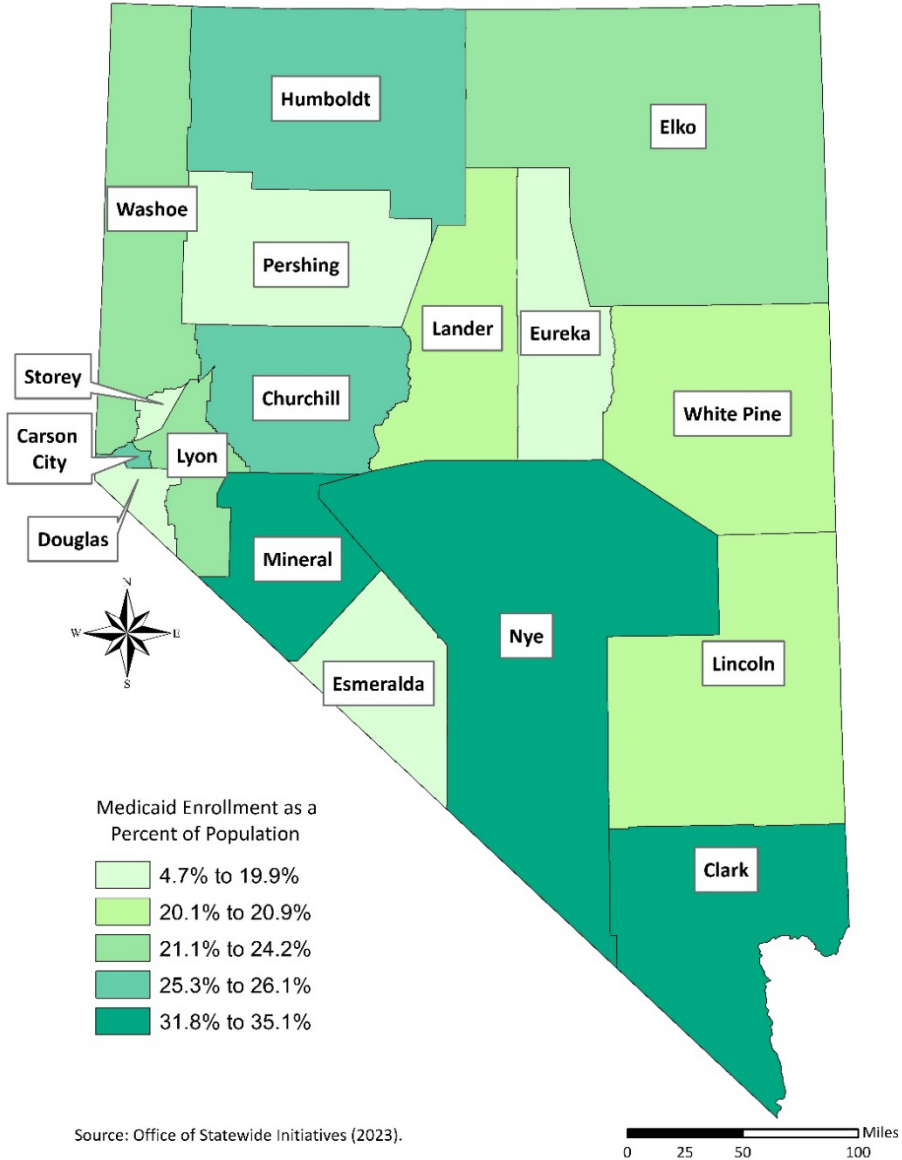
- 357,000 Nevadans or 13.0% of the state were uninsured in 2020, including 31,000 rural residents or 11.7% of the rural population
- Uninsured rates for the population under the age of 65 in rural Nevada range from 8.7% in White Pine County to 14.7% in Pershing County

# Medicare

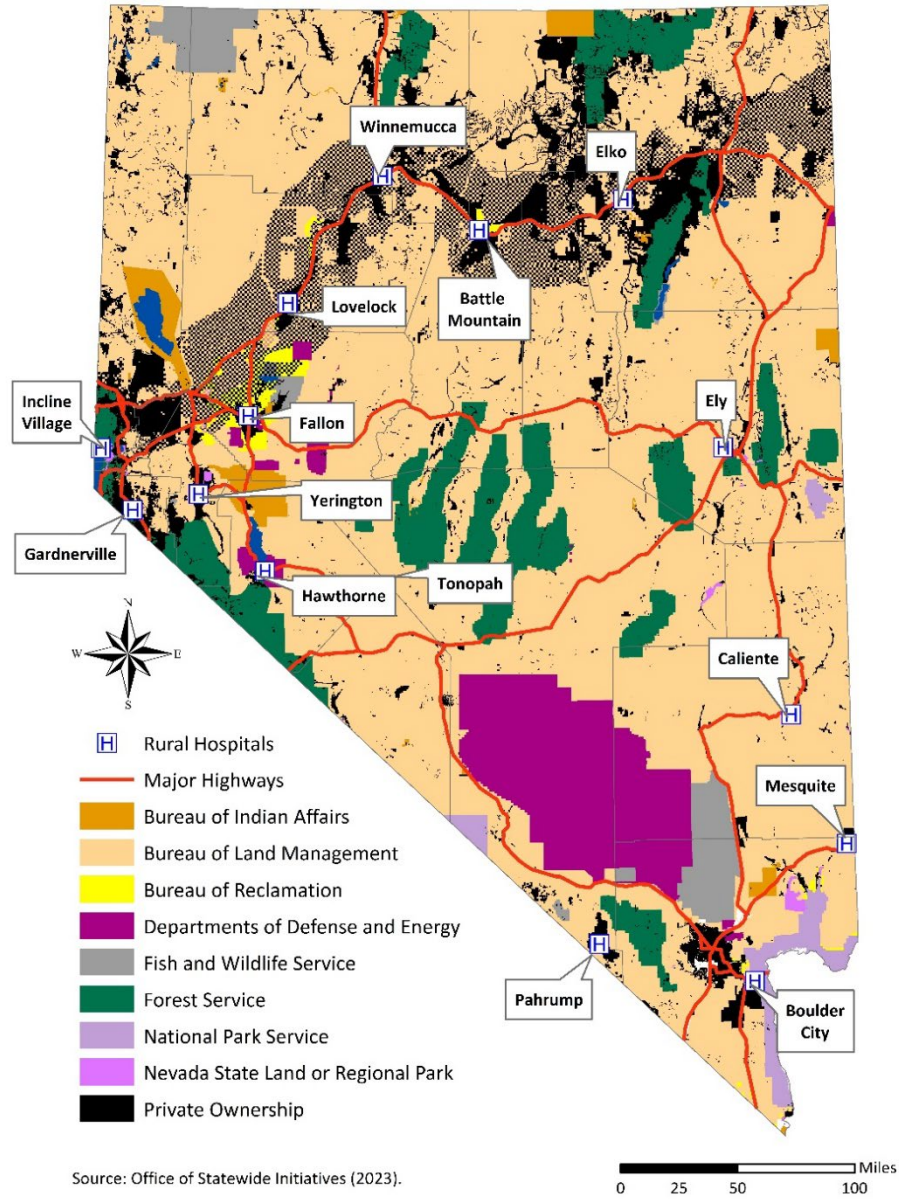
- Rural counties possess higher percentages of Medicare enrollees
- 24.6% of rural residents are covered by Medicare
- Over the past decade, Medicare Advantage penetration has been greater in rural (124.0%) versus urban counties (101.7%)

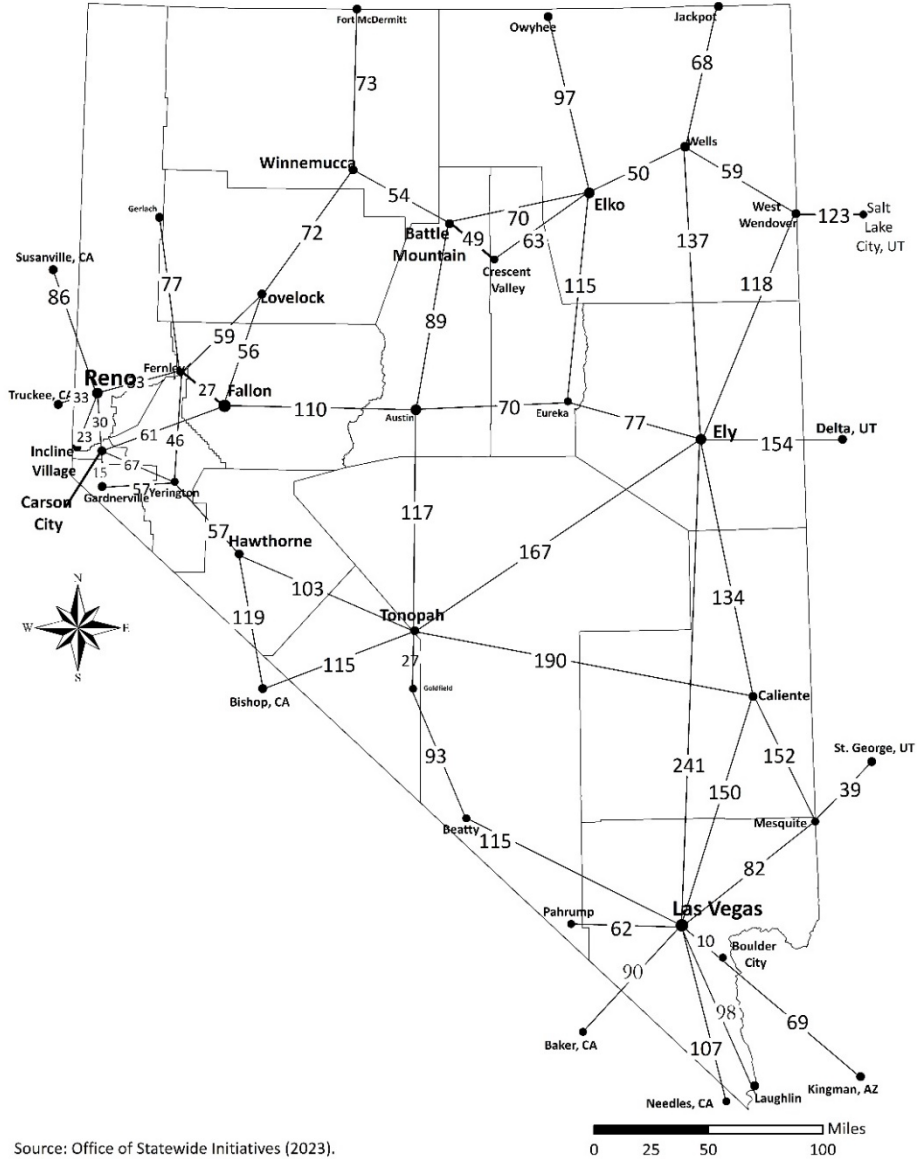


# Medicaid



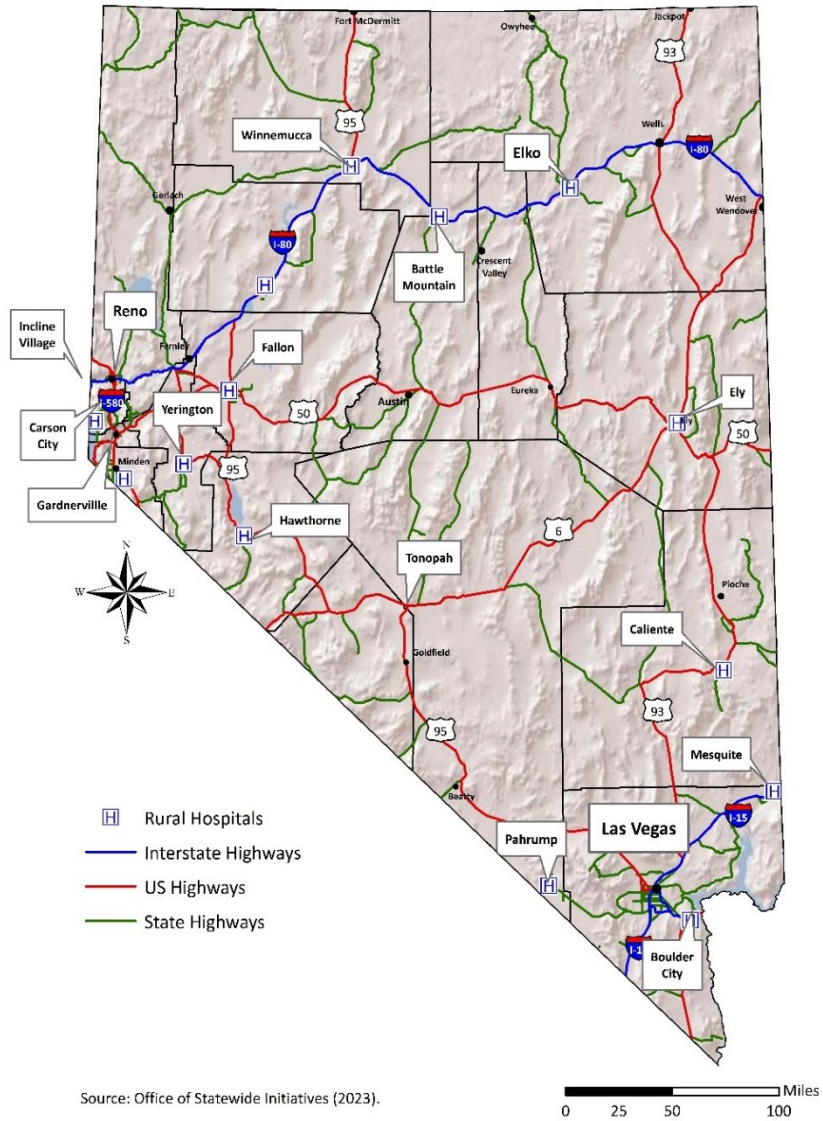
- Medicaid currently insures 924,000 Nevadans or 1 in 4 residents of the state
- Since 2011, Medicaid enrollment in Nevada’s rural counties has doubled
- Nevada Medicaid aims to have every recipient in a managed care plan by January 1, 2026





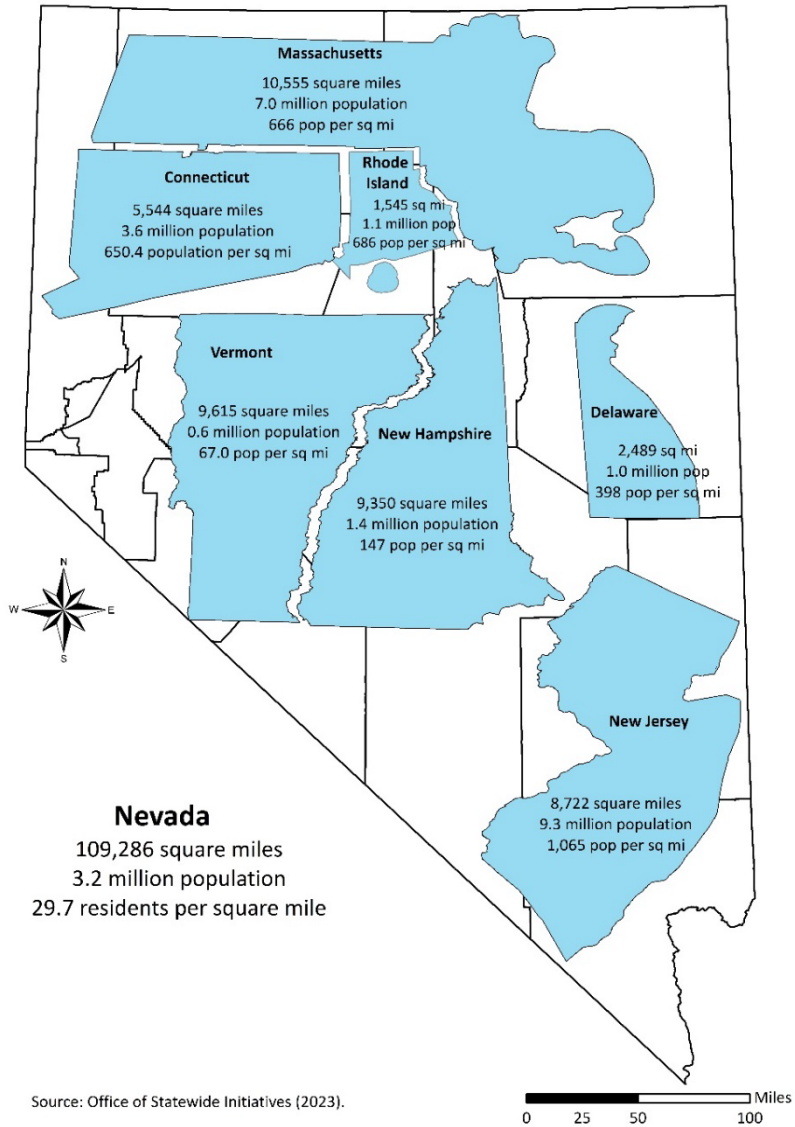
Source: Office of Statewide Initiatives (2023).



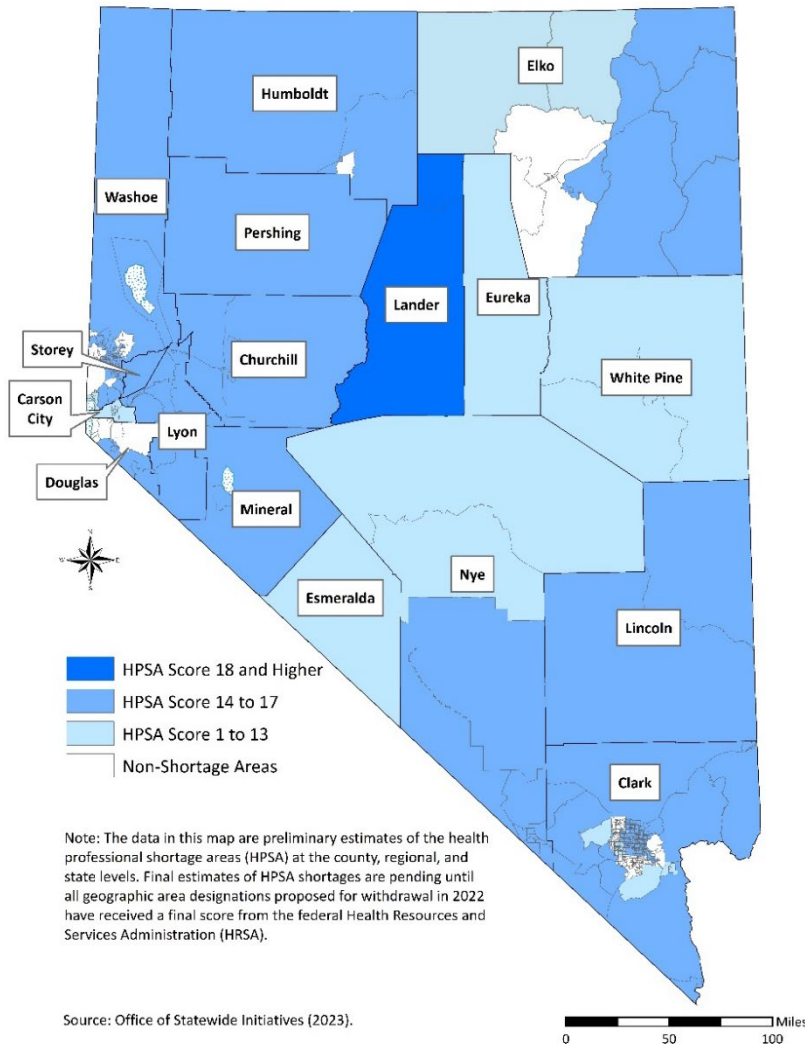


Source: Office of Statewide Initiatives (2023).





# Primary Care Shortages

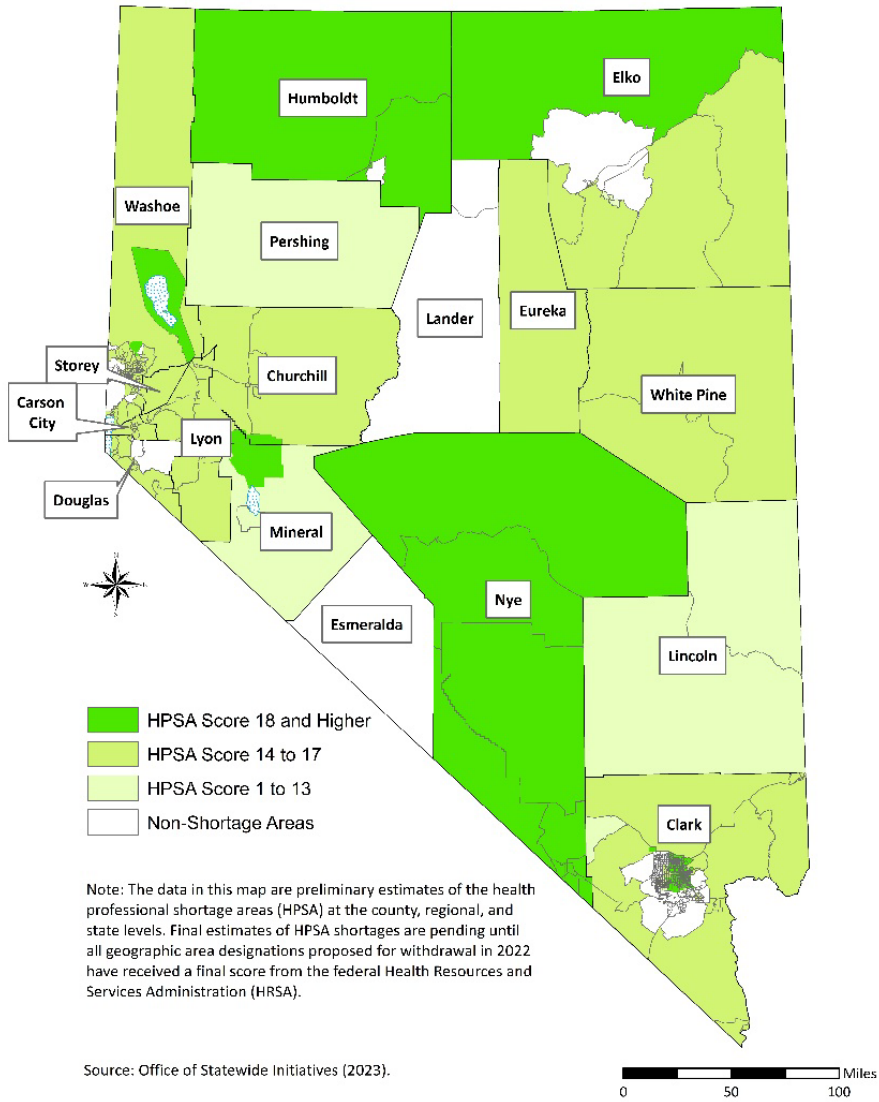


- Over 2 million Nevadans reside in a primary care health professional shortage area (HPSA) or 68.4% of the state's population of 3.3 million
- 11 of 14 rural and frontier counties of Nevada are single-county primary care HPSAs
- 247,000 rural residents or 81.6% of the rural population live in a primary care HPSA



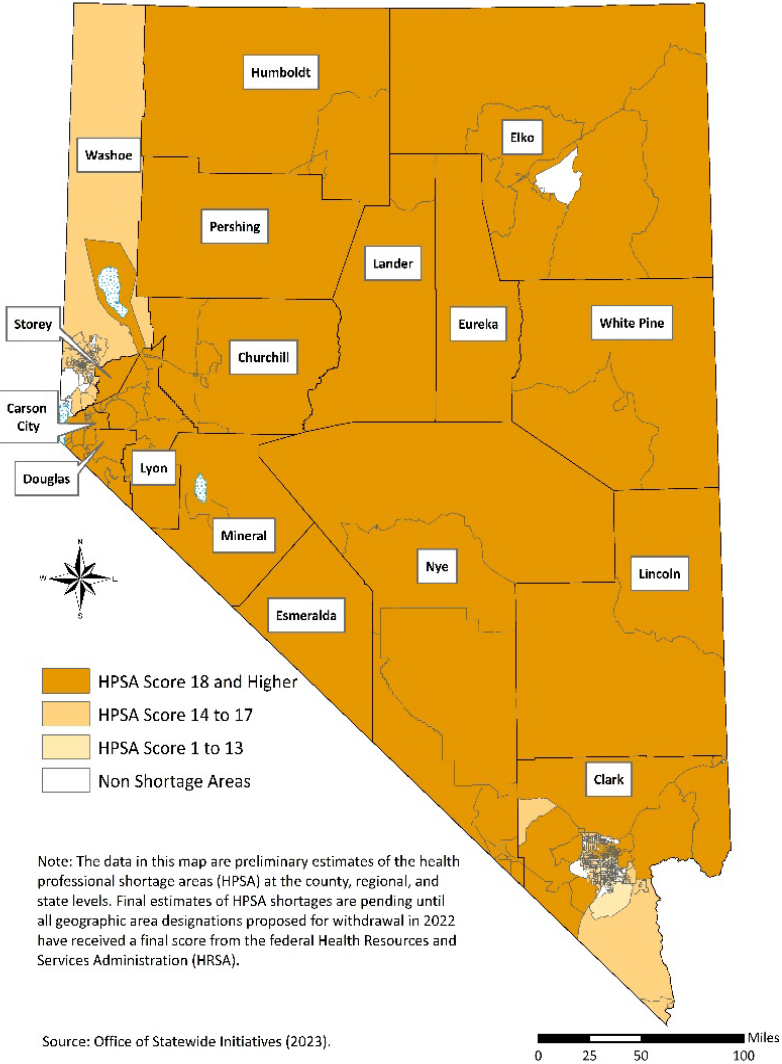
# Dental Shortages

- 2.2 million Nevadans reside in a dental HPSA or 62.3% of the state's population of 3.3 million
- 12 single-county dental HPSAs in Nevada, including 11 of 14 rural and frontier counties of Nevada



# Mental Health Shortages

- 2.9 million Nevadans reside in a mental HPSA or 85.6% of the state's population
- 15 single-county mental HPSAs in Nevada, including all 14 rural and frontier counties of Nevada



# Questions and Discussion?

